

Experience  
country living  
near the city  
nestled in acres  
of beautiful  
woodland

Sandringham



Pears Court

Retirement Living with Jewish Care



Be part of a  
community within  
a community –  
where your  
choice matters

**JEWISH CARE**

# Welcome to Pears Court at Sandringham

All of us at Jewish Care are incredibly proud of our spectacular new Retirement Living development, Pears Court at Sandringham.

Sandringham is our vibrant new communal hub set in acres of beautiful woodland on the Stanmore/Hertfordshire border, which in addition to Pears Court, includes The Ronson Family Community Centre, Anita Dorfman House care home and Wolfson Assisted Living. Sandringham reflects our commitment to Jewish Care's values of excellence, innovation, compassion, integrity and inclusiveness which are at the heart of everything we do.

Sandringham is unique in its setting and the services it offers. This means that as well as being a lively and beautiful place to live or visit, it can also cater to the needs of all its clients and customers no matter how they change.

Sandringham has been especially designed to welcome the wider Jewish community inside and so offers a wealth of volunteering opportunities and activities, which encourage purposeful living, all supported by our dedicated on-site team.

Pears Court is the third of our new generation of Retirement Living residences following the successes of Wohl Court and Selig Court in Hendon and Golders Green, and is the first to be set in the green belt of the Hertfordshire borders.

Our ability to create such a warm and high-quality living environment in Pears Court at Sandringham is thanks only to our generous donors and supporters who shared our vision and turned it into reality. We are indebted to them.

I hope you will visit Sandringham very soon and see what a special place it has so quickly become. We very much look forward to welcoming you to Pears Court.



**Jonathan Zenios**  
Chair, Jewish Care

# Sandringham



## Pears Court

Retirement Living with Jewish Care

# Retirement Living with Jewish Care

What people who  
rent with us love  
about their homes





“I never thought I would move out of my house into an apartment but it is the best thing I’ve ever done.”

Bernice  
Lives at Jewish Care’s  
Retirement Living

“If you’re thinking of moving into Retirement Living, I say do it. It’s a new life – a very comfortable and enjoyable life.”

Pamela  
Lives at Jewish Care’s  
Retirement Living



“It is wonderfully run. There is support and help when we need it, but we also have our independence.”

Ellen and Alan  
Live at Jewish Care's  
Retirement Living



“Having your own flat and freedom as well as the support from caring staff is a privilege. In addition you have the benefit of a variety of activities which allow you to build friendships.”

Dani  
Lives at Jewish Care's  
Retirement Living





A unique  
community of  
care and wellbeing,  
set within acres  
of beautiful historic  
woodland and  
grounds





Quality of life:

## A beautiful place

Located on the Stanmore/Hertfordshire border, Pears Court at Sandringham is our newest development set in the beautiful landscaped Sandringham garden, known as 'Piaf's Garden'.

Piaf's Garden, accessible to all living at Pears Court, includes walkways round the site, paths to explore the peaceful lagoon area complete with viewing decks, a secluded walled garden and horticultural centre for those with green fingers to get involved, as well as a children's play area for those who have families visiting with young children to enjoy.



Acres of  
woodland



Communal  
courtyard



Accessible  
pathways



Enjoy nature on  
your doorstep



## Services and Care

# Personalised Care and Support

Have peace of mind that 24-hour on-site support is available, with staff who can respond in case of an emergency.

With our help, you can create and personalise your own care and support plan, so that you can maintain your independence, We provide a minimum of three hours support per week, however you can increase this should you need to.

You can choose from support services such as assistance with: shopping, cooking, housework and laundry, transport and arranging appointments.

We have fully trained in-house care teams, who offer flexible care packages. These are tailor-made to your requirements and can be purchased in increments of 15 minutes. Assistance with personal care and/or medication support is regulated by the Care Quality Commission (CQC).

As well as your three hours of support from Jewish Care you can purchase additional care and support from us or other providers or continue with pre-existing purchased care arrangements.

Sandringham offers a range of community and residential services, including our care home, Anita Dorfman House and Wolfson Assisted Living, enabling a transition to higher levels of care on site, should your or your spouse's circumstances or needs change over time, enabling you to remain close by your loved ones.



Personal alarm systems



3 hours individual support included



Flexible care packages available



Support with meals, shopping or administration available





Life at Pears Court

# Be part of a community within a community – where your choice matters

The apartments are organised around a garden courtyard connecting to The Ronson Family Community Centre, our latest spacious and impressive community centre. The centre offers a wide range of activities, an on-site synagogue, café and restaurant, shop and wellbeing services.

Pears Court at Sandringham also offers a bright and modern communal lounge, to enjoy relaxing or socialising in with family and friends.

Close by in Bushey, there are a range of Kosher shops including a butcher, baker and delicatessen as well as a Kosher restaurant. There are also local Synagogues in Bushey and Stanmore.



“Being part of a close Jewish community has given me new opportunities. Like leading services which I love”

David  
Lives at Jewish Care's  
Retirement Living



## Jewish Life at Pears Court

# An active life of wellbeing, friendship and community

Jewish life is central to Pears Court, with Shabbat and festivals providing special moments together. If you want to enjoy delicious Kosher meals, there is an on-site restaurant and café at The Ronson Family Community Centre, as well as access to Kosher restaurants and shops in the immediate vicinity. The building has Shabbat access and Shabbat lifts as well as synagogue services. If you want to easily buy your own shopping, there is also a small shop stocking a range of food and Kosher ready meals for convenience.

# Sandringham



# Pears Court

Retirement Living with Jewish Care

# Your Pears Court Apartment

Giving you the  
freedom to live  
as independently  
as you choose



## Life at Pears Court

Pears Court offers you the freedom to downsize and simplify your life; live in style with the peace of mind that having 24-hour support brings

Living in Pears Court gives the opportunity to be involved in a thriving Jewish community, to have time to enjoy later life and develop new interests or volunteer and become actively involved.

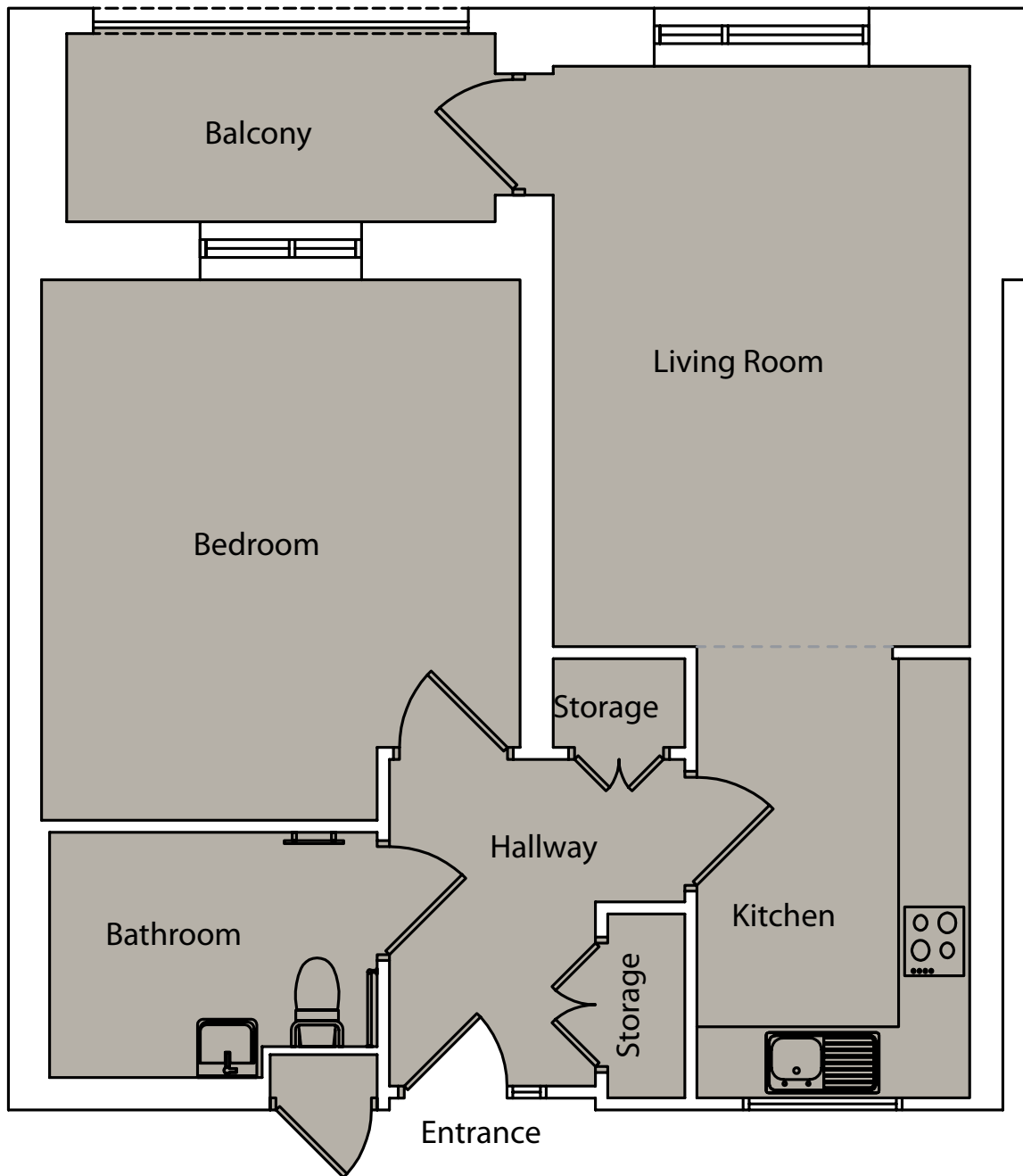
Each luxury apartment is beautifully designed, with an open plan fitted kitchen leading into a lounge area. The modern, fully tiled level access shower room is fitted with a wall mounted shower. Each apartment has a private balcony for you to relax and enjoy views of the beautiful, landscaped courtyard garden or woodland. Make your apartment your own by bringing your own furniture to arrange how you wish.

The peaceful courtyard garden has direct access to The Ronson Family Community Centre. This spacious and impressive community centre offers a wide range of activities, an onsite synagogue, shop, kosher café and restaurant, hairdressers and wellbeing services, which can be enjoyed by all who live at Pears Court.

Pears Court also offers a bright modern lounge; a sociable space to relax with a book or socialise with neighbours, family and friends.

# The Apartments

Situated at Pears Court are 48 luxury one and two-bedroom apartments to rent.



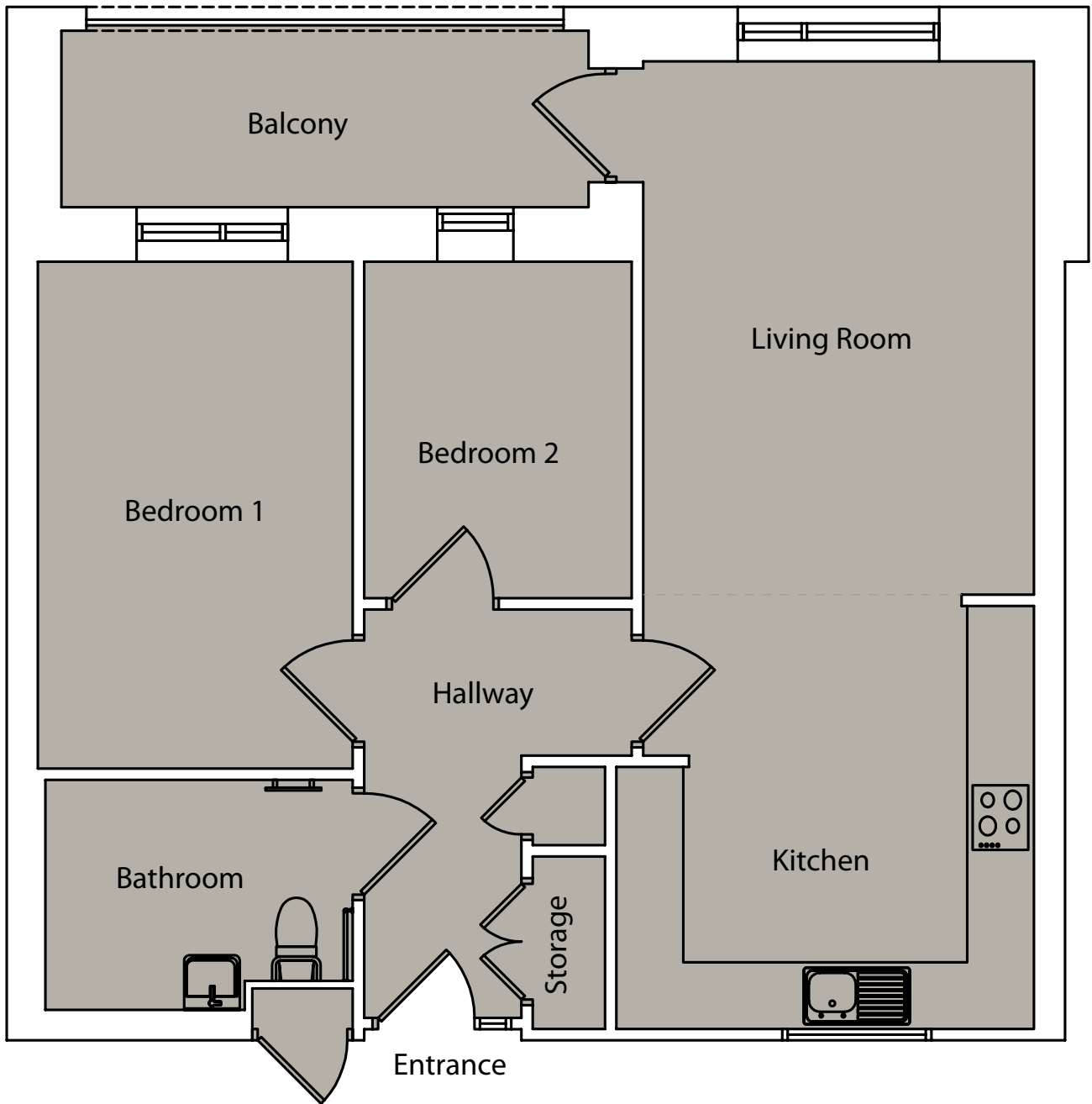
## One Bedroom

Range from 58-61 sq metres

Floorplans are available for each apartment.



N.B These are illustrative, actual plans may vary



## Two Bedroom

Range from 67-74 sq metres

Floorplans are available for each apartment.

# Amenities

- 24-Hour on-site support from a dedicated team
- Choice of communal lounges for relaxation and entertainment
- Communal courtyard and garden
- Guest suite for visitors to use when staying over (bookable in advance, charges apply)
- Hairdressers and salon (charges apply)
- Mobility scooter park
- Shop selling essentials and groceries, as well as Kosher meals
- On-site concierge
- Laundry facilities
- Supervised Kosher café and restaurant in community centre (charges apply)
- Support from the maintenance team (charges apply)
- Synagogue
- Two lifts (including a Shabbat lift)
- Video phone entry system
- Wi-Fi in communal areas
- Limited parking available

Pears Court has secure entry systems and CCTV. Security staff are on-site 24-hours a day, seven days a week.

Each apartment features an advanced emergency call system, smoke detector, heat detector and carbon monoxide alarm.



Retirement Living with Jewish Care





# Retirement Living with Jewish Care

The benefits of  
renting a Jewish Care  
Retirement Living  
apartment



# The Benefits of Renting a Jewish Care Apartment

By renting, all the worry about the maintenance and repairs of the outside of your property, the gardens and communal areas is taken away, saving time, money and inconvenience. In addition, it takes away the stress of resale at the end of the tenancy, as you won't be tied into any resale agreements.

We have registered our Retirement Living developments at Selig Court, Wohl Court and Pears Court with the Associated Retirement Community Operators (ARCO). As an 'Approved Operator' we aim to comply with the high quality standards set by the ARCO Consumer Code. For more information see [www.arcouk.org](http://www.arcouk.org).

**Enjoy living in your apartment, whilst Jewish Care maintains the building and communal areas, which include:**

- Ground maintenance
- Cleaning external windows
- Communal cleaning
- Refuse collection
- Building insurance
- Concierge service

# Eligibility

Our Retirement Living communities welcome applications from anyone over the age of 60 years old who is Jewish and eligible to rent in the UK, and needs a minimum of three hours support per week.

# The Next Step

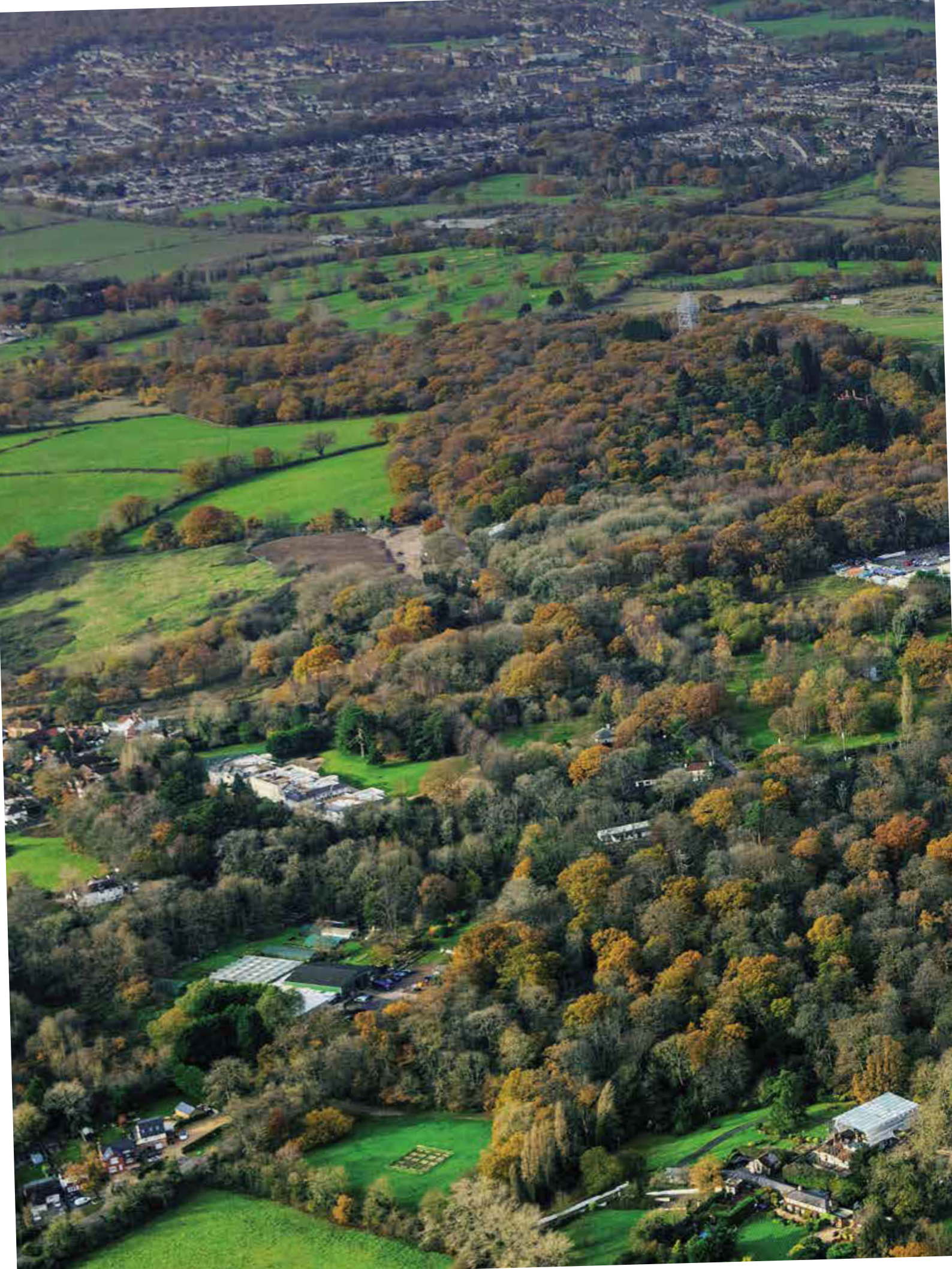
Experience Retirement Living at Pears Court for yourself.

For more information, please get in touch with a trained advisor in the Living with Jewish Care Team, who will organise viewings, help guide you through the process and organise an assessment of your needs.

Telephone: 020 8922 2200

Email: [retirementliving@jcare.org](mailto:retirementliving@jcare.org)

Visit: [jewishcare.org/retirementliving](http://jewishcare.org/retirementliving)





Jewish Care is the largest not-for-profit health and social care organisation serving the Jewish community in the UK, with centres and services based in London and the South East. Every week we support over 10,000 members of the community.

In everything we do at Jewish Care, we are guided by our values of excellence, innovation, compassion, inclusiveness and integrity.

## Retirement Living with Jewish Care

The UK's leading  
provider of health and  
social care serving the  
Jewish Community

Pears Court  
Sandringham  
Common Road  
HA7 3FT

Selig Court  
Maurice and Vivienne Wohl Campus  
Beverley Gardens  
London  
NW11 9AF

Wohl Court  
19 Church Road  
London  
NW4 4FD

Pears Court, Selig Court and Wohl Court  
are registered with ARCO.

Shebson Lodge  
1 Cobham Road  
Westcliff-on-Sea  
SS0 8EG

Telephone: 020 8922 2200  
Email: [retirementliving@jcare.org](mailto:retirementliving@jcare.org)  
Visit: [jewishcare.org/retirementliving](http://jewishcare.org/retirementliving)



The establishment of Pears Court has been made possible thanks to the exceptional generosity of the Pears Foundation

